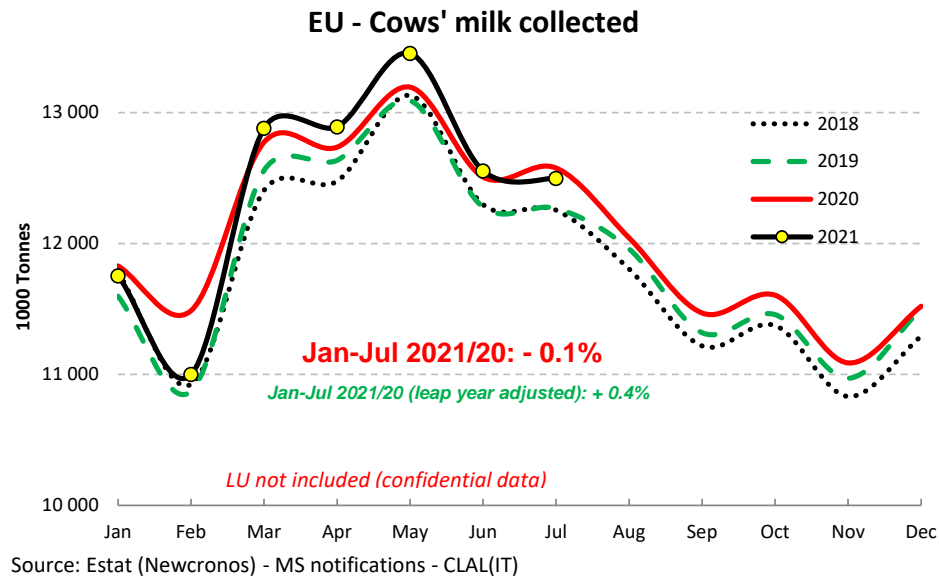
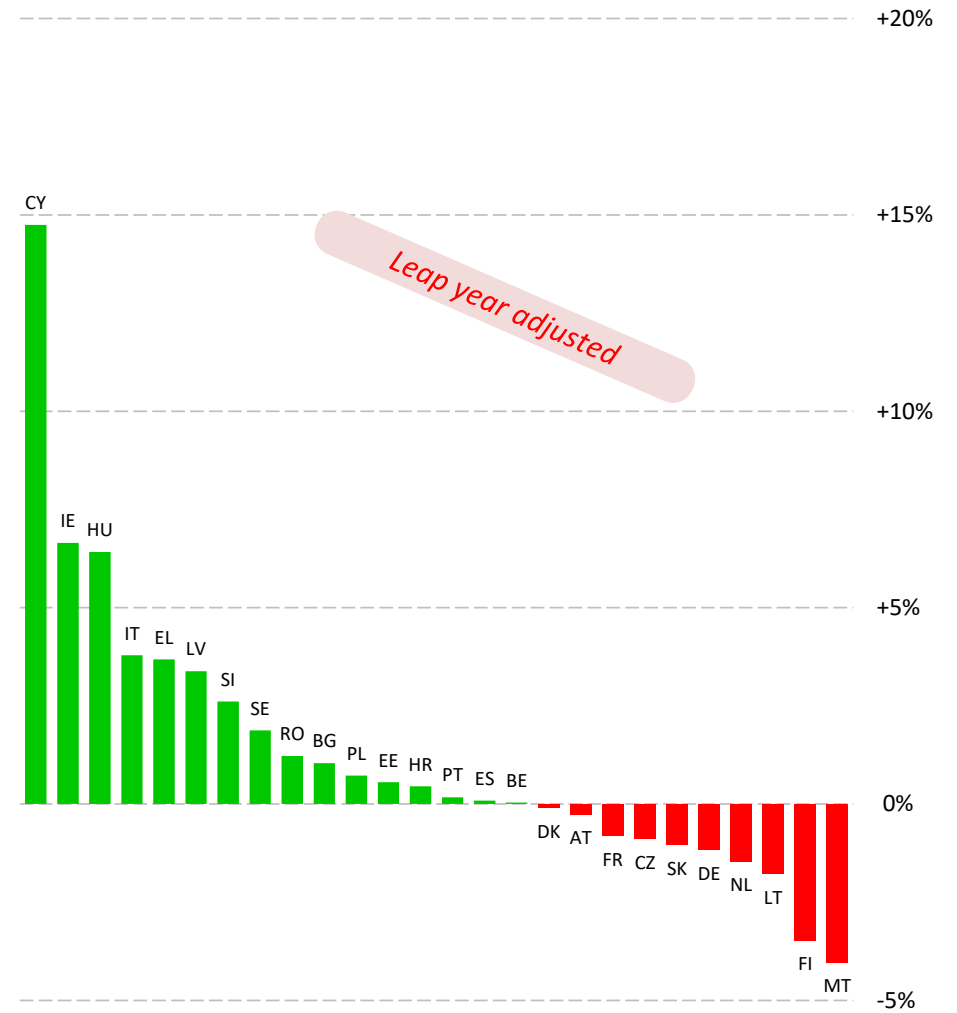


EU Cow's Milk collected

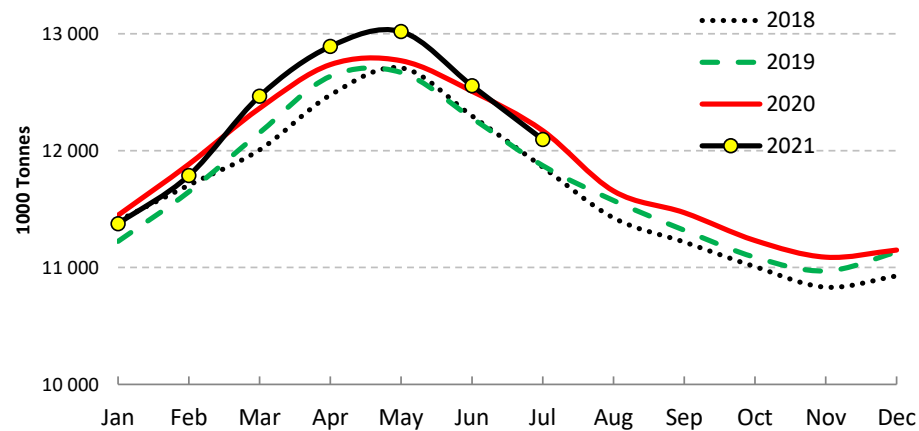


Cows' milk collected

2021/20 Jan-Jul (y/y % chg)



EU - Cows' milk collected (30 days months)



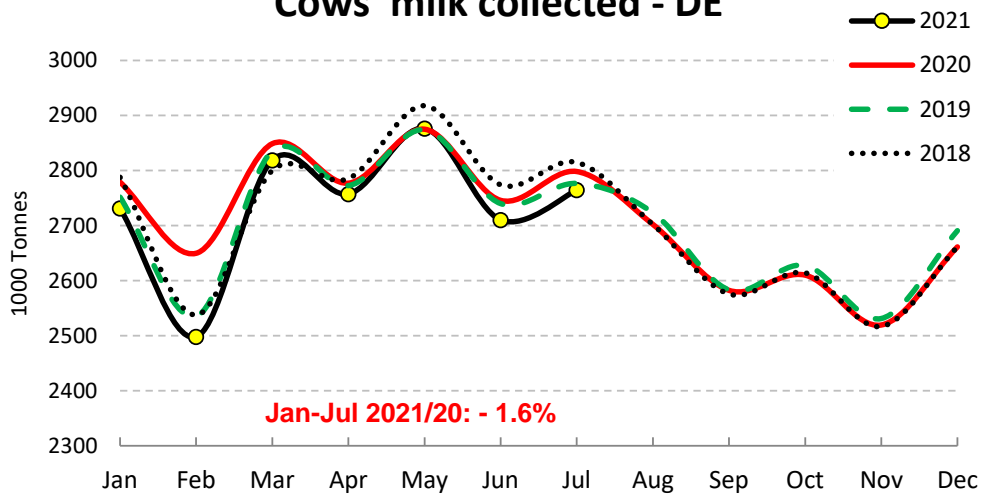
Source: Estat (Newcronos) - MS notifications

rem: not including LU (confidential data)

Source: Estat (Newcronos) - MS notifications

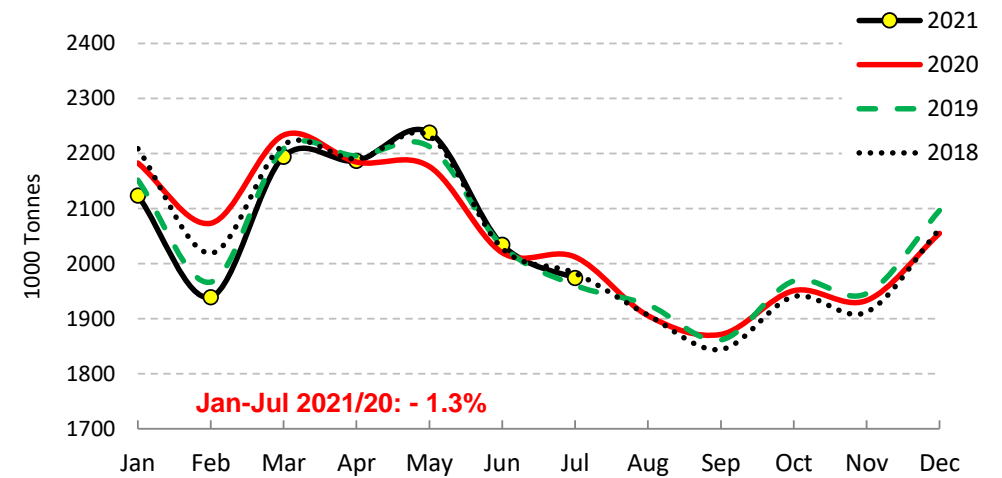
EU Cows' milk collected - MAIN PRODUCERS (1/2)

Cows' milk collected - DE



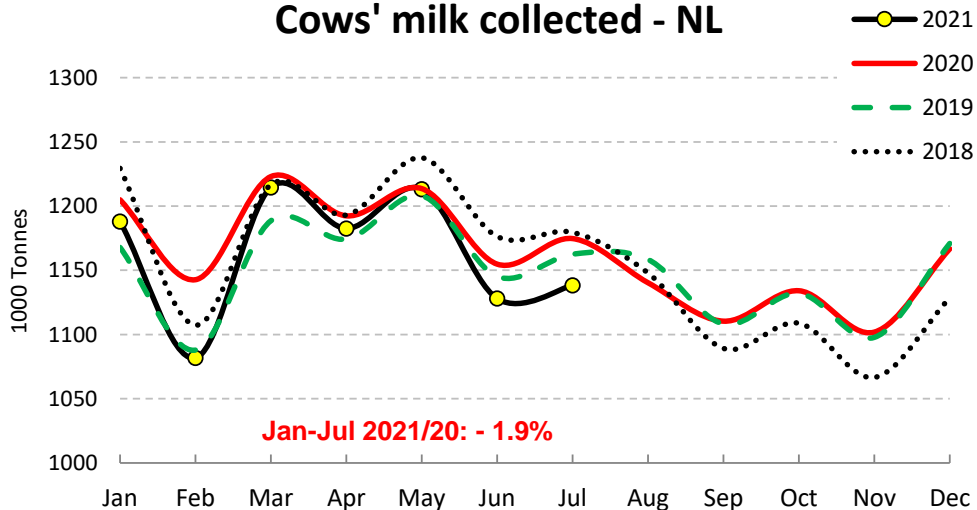
Source : Estat, Newcronos

Cows' milk collected - FR



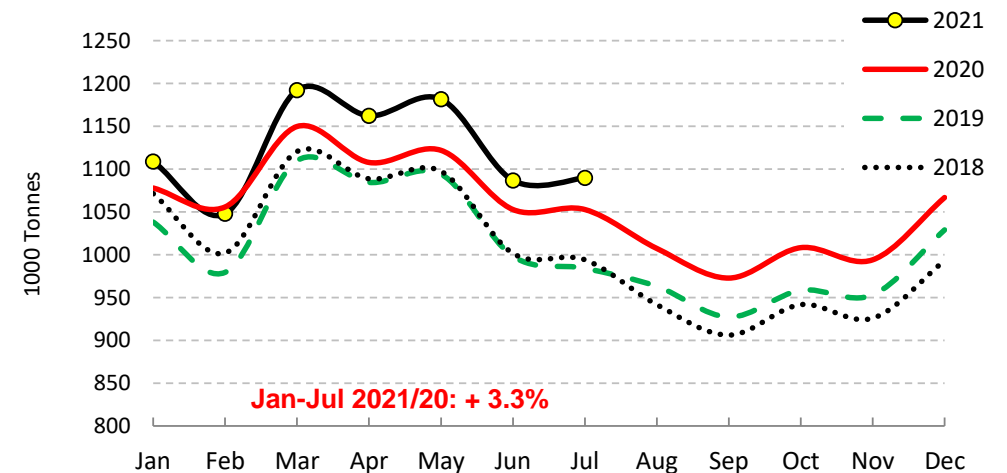
Source : Estat, Newcronos

Cows' milk collected - NL



Source : Estat, Newcronos

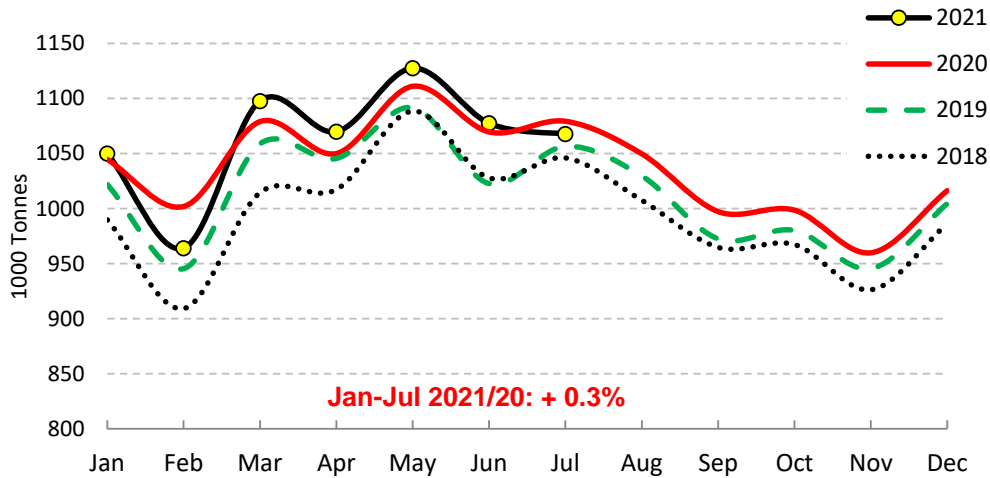
Cows' milk collected - IT



Source: Estat, Newcronos, CLAL

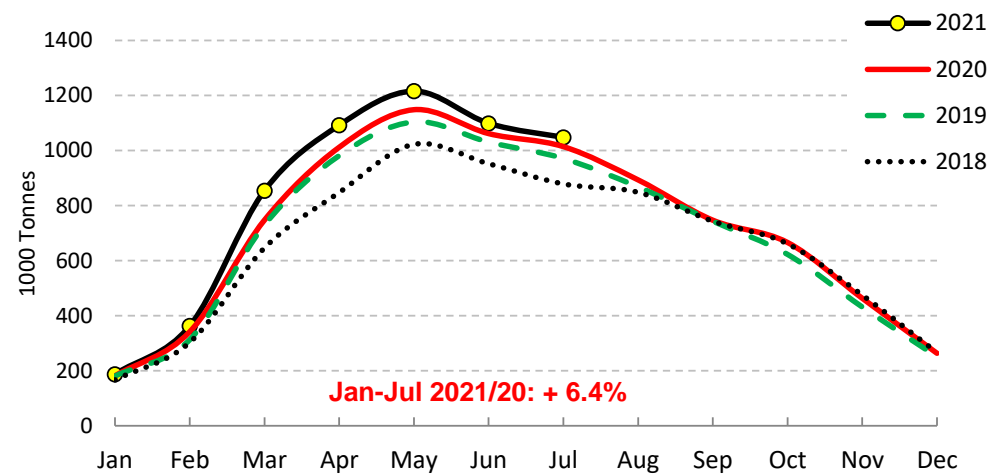
EU Cows' milk collected - MAIN PRODUCERS (2/2)

Cows' milk collected - PL



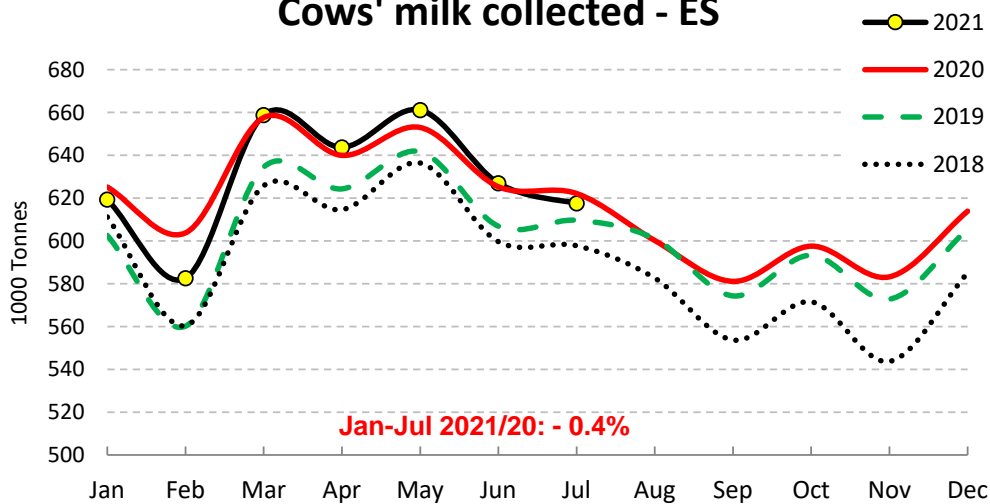
Source : Estat, Newcronos , AGEA

Cows' milk collected - IE



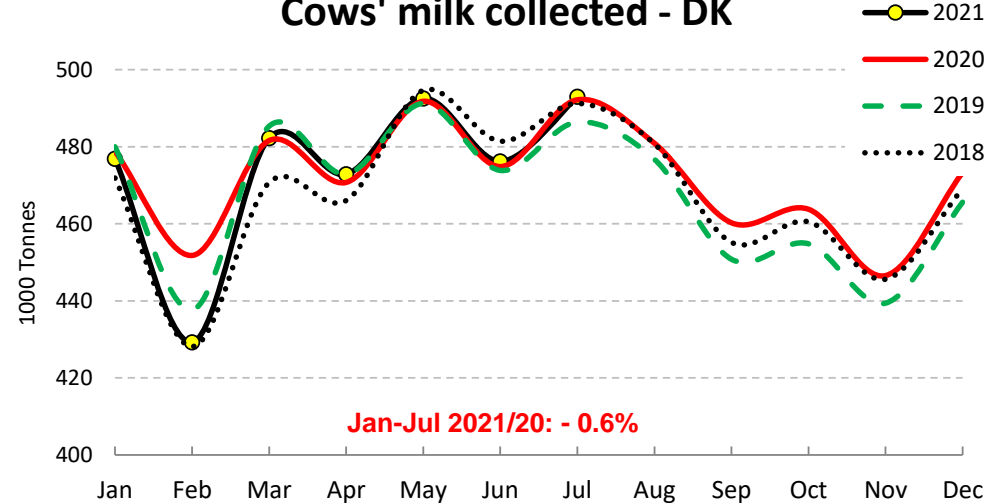
Source : Estat, Newcronos

Cows' milk collected - ES



Source : Estat, Newcronos

Cows' milk collected - DK



Source : Estat, Newcronos

EU Cow's Milk collected

comparison of the last available month with the same month of the previous year

Jul 21 compared to Jul 20				
Rank	evolution in %		evolution in 1000 Tons	
	MS	%	MS	Tons
1.	CY	+ 8.7%	IT	+ 37
2.	HU	+ 7.0%	IE	+ 34
3.	IT	+ 3.5%	HU	+ 9
4.	IE	+ 3.3%	CY	+ 2
5.	PT	+ 0.8%	AT	+ 2
6.	SI	+ 0.7%	PT	+ 1
7.	AT	+ 0.6%	DK	+ 1
8.	DK	+ 0.2%	SI	+ 0
9.	SE	- 0.6%	MT	- 0
10.	ES	- 0.7%	HR	- 1
11.	CZ	- 0.8%	EL	- 1
12.	PL	- 1.1%	EE	- 1
13.	DE	- 1.2%	LV	- 1
14.	EE	- 1.7%	SE	- 1
15.	LV	- 1.9%	BG	- 1
16.	FR	- 1.9%	RO	- 2
17.	EL	- 1.9%	CZ	- 2
18.	RO	- 1.9%	SK	- 2
19.	HR	- 2.3%	ES	- 5
20.	BG	- 2.4%	LT	- 6
21.	BE	- 2.6%	BE	- 10
22.	SK	- 3.0%	FI	- 10
23.	NL	- 3.1%	PL	- 11
24.	LT	- 4.6%	DE	- 34
25.	FI	- 5.1%	NL	- 36
26.	MT	- 8.7%	FR	- 38
EU		- 0.6%	EU	- 78

Jul 20 compared to Jul 19				
Rank	evolution in %		evolution in 1000 Tons	
	MS	%	MS	Tons
1.	CY	+ 14.3%	IT	+ 69
2.	IT	+ 7.0%	FR	+ 51
3.	CZ	+ 5.1%	IE	+ 43
4.	EE	+ 5.0%	PL	+ 23
5.	BE	+ 4.7%	DE	+ 22
6.	SI	+ 4.5%	BE	+ 17
7.	IE	+ 4.4%	CZ	+ 13
8.	BG	+ 4.3%	ES	+ 13
9.	SE	+ 4.2%	NL	+ 12
10.	HU	+ 3.7%	SE	+ 9
11.	FI	+ 3.2%	FI	+ 6
12.	EL	+ 3.0%	DK	+ 6
13.	RO	+ 2.9%	HU	+ 5
14.	FR	+ 2.6%	EE	+ 3
15.	SK	+ 2.4%	RO	+ 3
16.	PL	+ 2.2%	PT	+ 3
17.	MT	+ 2.1%	CY	+ 3
18.	ES	+ 2.1%	BG	+ 3
19.	PT	+ 1.8%	SI	+ 2
20.	HR	+ 1.6%	SK	+ 2
21.	DK	+ 1.2%	EL	+ 2
22.	NL	+ 1.0%	HR	+ 1
23.	DE	+ 0.8%	LV	+ 0
24.	LV	+ 0.6%	LT	+ 0
25.	LT	+ 0.2%	MT	+ 0
26.	AT	- 0.6%	AT	- 1
EU		+ 2.5%	EU	+ 309

Jul 19 compared to Jul 18				
Rank	evolution in %		evolution in 1000 Tons	
	MS	%	MS	Tons
1.	CY	+ 25.7%	IE	+ 92
2.	IE	+ 10.5%	ES	+ 12
3.	MT	+ 5.0%	PL	+ 11
4.	BE	+ 2.4%	BE	+ 9
5.	LV	+ 2.3%	CY	+ 4
6.	ES	+ 2.0%	LV	+ 2
7.	EL	+ 1.5%	HU	+ 1
8.	BG	+ 1.0%	EL	+ 1
9.	PL	+ 1.0%	BG	+ 1
10.	HU	+ 1.0%	MT	+ 0
11.	AT	- 0.2%	AT	- 0
12.	EE	- 0.8%	EE	- 0
13.	LT	- 0.9%	SI	- 1
14.	DK	- 1.0%	SK	- 1
15.	IT	- 1.0%	LT	- 1
16.	FR	- 1.1%	HR	- 2
17.	PT	- 1.3%	PT	- 2
18.	DE	- 1.4%	RO	- 3
19.	SK	- 1.4%	DK	- 5
20.	NL	- 1.4%	FI	- 5
21.	SI	- 1.8%	SE	- 5
22.	SE	- 2.2%	CZ	- 7
23.	FI	- 2.4%	IT	- 10
24.	CZ	- 2.5%	NL	- 17
25.	RO	- 2.6%	FR	- 22
26.	HR	- 4.6%	DE	- 38
EU		+ 0.1%	EU	+ 13

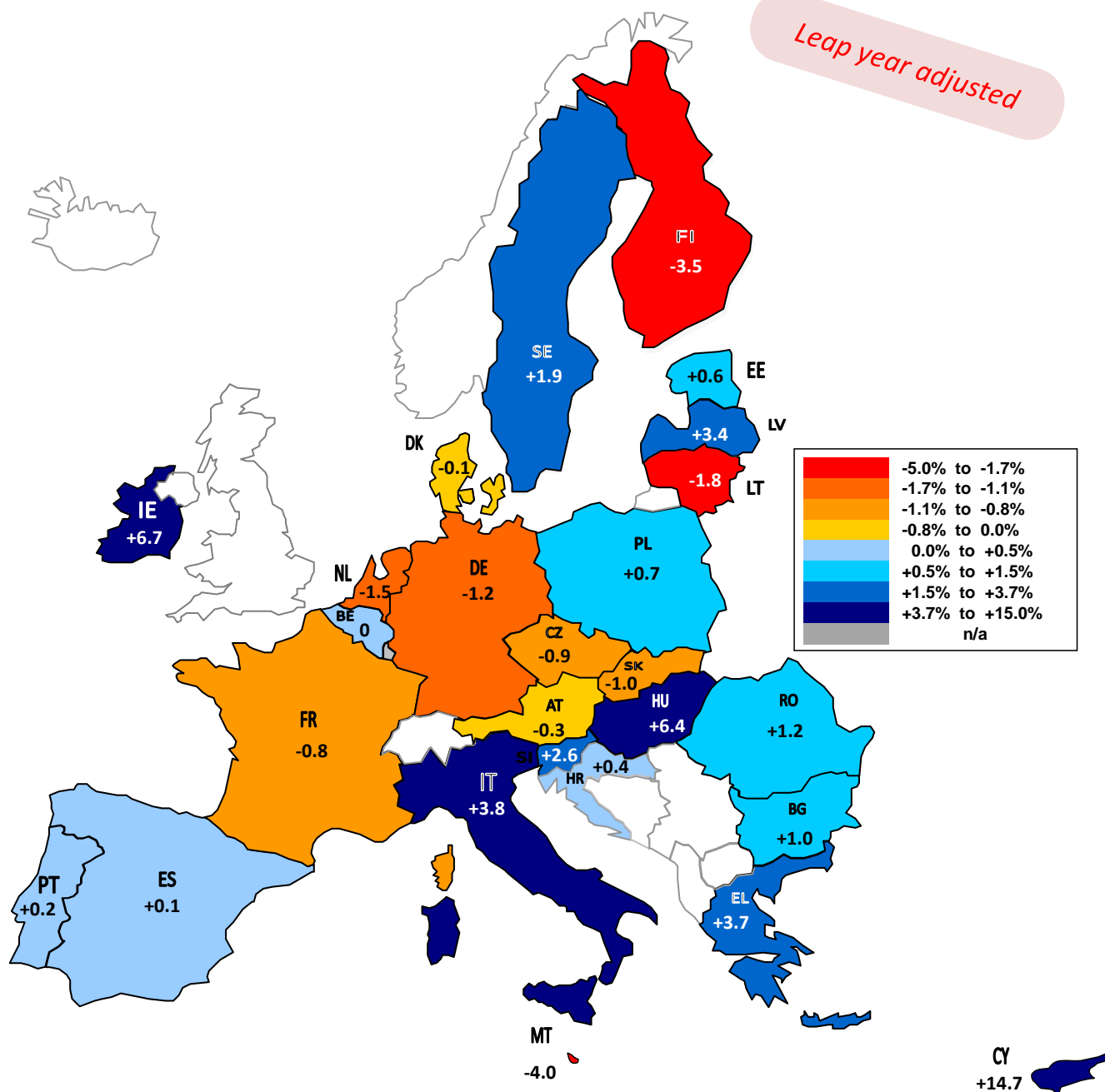
∴ estimates

rem: LU not included (confidential data)

EU Milk Deliveries compared to last period (in %)

(Jan - Jul 2021 / Jan - Jul 2020)

Leap year adjusted



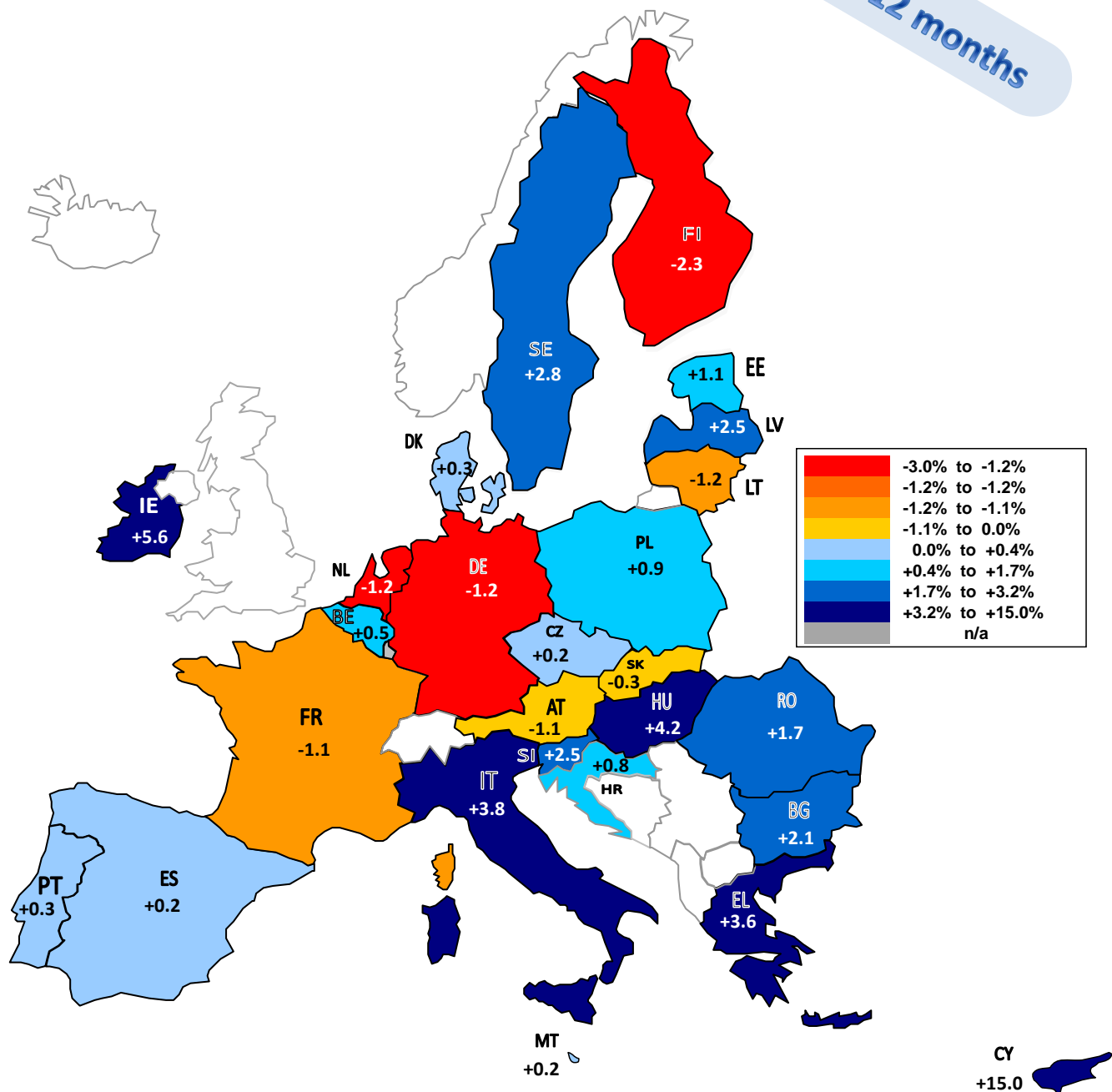
Source : MS' Communications to Eurostat, FEGA, AGEA, Reg.479/2010.1(a)1

The designations employed and the presentation of material on the map do not imply the expression of any opinion whatsoever on the part of the European Union concerning the legal status of any country, territory or area or of its authorities, or concerning the delimitation of its frontiers or boundaries.

EU Milk Deliveries compared to last period (in %)

(Aug 2020 - Jul 2021 / Aug 2019 - Jul 2020)

Last 12 months



Source : MS' Communications to Eurostat, FEQA, AGEA, Reg.479/2010.1(a)1

The designations employed and the presentation of material on the map do not imply the expression of any opinion whatsoever on the part of the European Union concerning the legal status of any country, territory or area or of its authorities, or concerning the delimitation of its frontiers or boundaries.