



### EU PRICES of COW's RAW MILK in EURO/100 kg

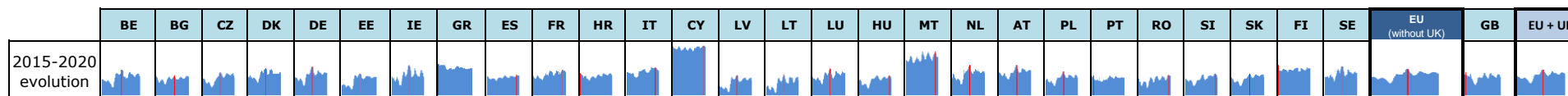
Source: Regulation (EU) No 2017/1185 Article 12(a) - Annex II.4(a) (prices of raw milk at real fat and protein content paid to milk producers)

	Belgium	Bulgaria	Czech Rep.	Denmark	Germany	Estonia	Ireland	Greece	Spain	France	Croatia	Italy	Cyprus	Latvia	Lithuania	Luxembourg	Hungary	Malta	Netherlands	Austria	Poland	Portugal	Romania	Slovenia	Slovakia	Finland	Sweden	EU (without UK)	U.K.	EU + UK	% EU (without UK) compared to previous month (%)	
2018m07	30.17	29.36	30.79	37.17	33.19	30.18	31.76	39.53	30.29	33.70	32.16	35.25	56.67	27.65	25.79	31.36	28.04	51.57	35.75	35.33	30.38	30.07	28.45	29.78	30.77	35.86	33.02	33.12	31.26	32.94	+ 1.9%	Jul-18
2018m08	31.82	29.38	31.17	37.15	33.83	30.34	33.41	39.59	30.49	34.63	31.65	35.26	56.68	27.97	25.74	32.49	28.33	53.21	35.75	35.12	30.72	29.79	29.00	29.89	30.82	36.00	33.29	33.63	33.09	33.57	+ 1.5%	Aug-18
2018m09	33.73	29.72	31.96	37.95	35.43	31.61	37.00	39.83	30.78	35.98	33.00	35.44	56.83	28.95	28.15	34.12	28.69	53.64	37.00	36.45	31.60	30.03	28.82	30.96	31.71	37.60	34.70	34.89	34.30	34.83	+ 3.8%	Sep-18
2018m10	35.12	30.30	32.82	37.94	36.63	31.80	38.75	39.61	31.55	36.71	33.84	36.81	56.90	29.34	30.76	36.01	29.57	51.56	38.00	37.86	32.57	31.05	30.52	31.98	32.45	38.87	37.57	35.97	34.60	35.83	+ 3.1%	Oct-18
2018m11	35.69	30.43	33.54	37.93	37.16	32.29	39.04	39.25	32.33	36.73	33.69	37.08	57.82	29.65	31.66	36.75	30.29	51.55	37.25	38.68	32.85	31.84	31.62	32.38	32.92	38.74	37.21	36.21	34.80	36.07	+ 0.7%	Nov-18
2018m12	35.53	30.83	34.50	36.97	36.47	32.11	36.90	38.74	32.04	36.00	34.34	37.20	58.11	29.99	31.39	36.11	30.78	49.55	37.25	39.20	33.20	31.84	32.01	31.95	33.16	38.57	37.44	35.83	32.90	35.54	- 1.0%	Dec-18
2019m01	33.86	30.94	34.66	34.16	35.47	31.71	34.28	38.88	32.04	35.98	33.96	39.51	58.07	30.21	30.61	34.96	31.08	48.22	36.25	38.25	32.48	31.09	31.46	32.56	33.26	38.27	35.96	35.28	32.51	35.02	- 1.5%	Jan-19
2019m02	33.71	30.93	34.17	34.17	35.22	32.03	34.38	38.88	32.04	35.91	33.70	39.65	58.16	30.30	30.66	34.16	31.43	46.95	36.50	38.02	32.23	31.71	31.37	32.18	33.03	37.96	35.17	35.20	32.52	34.94	- 0.2%	Feb-19
2019m03	33.59	30.76	34.21	34.17	34.82	31.57	32.63	38.29	31.65	33.54	33.33	39.32	57.89	30.34	30.56	34.44	31.48	46.71	36.50	37.64	32.39	30.55	31.04	32.27	32.78	37.60	35.04	34.52	32.76	34.35	- 1.9%	Mar-19
2019m04	32.97	29.96	33.71	34.16	34.49	31.71	31.66	38.23	31.65	35.66	33.26	39.07	57.60	30.26	30.14	34.15	30.87	45.55	36.00	37.84	31.77	30.60	30.22	32.40	32.60	37.56	35.13	34.61	31.84	34.34	+ 0.2%	Apr-19
2019m05	32.48	29.72	33.42	34.15	33.99	31.08	31.47	37.86	31.55	34.84	33.28	39.09	57.14	29.35	28.09	33.59	30.34	45.74	35.25	37.45	31.49	30.25	28.70	32.10	32.61	37.06	34.00	34.12	31.09	33.83	- 1.4%	May-19
2019m06	31.64	29.44	32.99	34.15	33.22	30.47	31.95	38.09	31.17	34.00	32.52	39.09	56.79	28.53	26.43	33.06	30.08	49.07	35.75	36.33	31.02	30.24	28.29	31.62	32.18	36.62	34.34	33.71	30.63	33.42	- 1.2%	Jun-19
2019m07	31.12	29.66	32.83	34.16	32.93	30.34	31.08	37.93	31.07	35.86	32.44	39.16	57.01	28.44	26.21	32.69	29.83	50.55	35.00	35.97	30.78	30.17	28.43	31.74	31.99	37.27	34.02	33.81	30.82	33.52	+ 0.3%	Jul-19
2019m08	31.50	29.78	32.39	34.18	33.01	30.06	31.95	37.93	31.36	36.40	32.41	39.58	56.92	28.37	26.13	33.11	30.13	51.60	35.00	35.45	30.12	30.21	28.96	32.02	31.67	37.60	33.37	33.95	30.56	33.63	+ 0.4%	Aug-19
2019m09	32.69	30.30	32.56	34.03	33.88	30.30	34.48	38.72	31.65	37.34	32.95	39.69	57.20	28.41	27.52	34.23	30.24	52.12	35.00	35.97	30.41	30.55	29.77	32.65	32.26	38.35	34.30	34.61	32.28	34.39	+ 1.9%	Sep-19
2019m10	33.48	31.02	33.27	34.01	34.65	30.54	36.61	38.21	32.14	37.66	33.65	39.69	57.98	28.68	29.36	34.95	31.63	52.10	34.75	36.43	31.42	30.80	31.65	33.65	32.68	39.55	35.01	35.18	32.58	34.93	+ 1.6%	Oct-19
2019m11	34.15	31.54	33.95	33.99	35.19	30.89	37.29	38.48	33.01	37.46	34.06	39.23	58.33	29.70	30.21	35.78	31.99	53.78	35.50	36.95	32.85	30.83	32.68	34.05	33.03	39.45	35.46	35.59	33.77	35.41	+ 1.2%	Nov-19
2019m12	35.36	31.75	34.25	33.99	35.29	31.32	36.52	38.89	32.82	36.78	34.35	38.70	58.45	30.10	30.62	35.56	32.64	52.36	36.41	37.31	33.33	30.77	32.98	34.16	33.13	39.02	36.08	35.60	33.40	35.39	+ 0.1%	Dec-19
2020m01	34.33	31.96	34.58	33.99	34.93	31.30	34.67	38.82	32.62	36.42	34.44	37.49	58.57	30.21	30.84	35.24	32.55	49.47	36.50	36.70	32.76	30.85	32.48	33.68	33.23	38.51	35.21	35.15	32.89	34.93	- 1.3%	Jan-20
2020m02	33.82	32.00	34.48	35.07	34.81	31.44	34.86	38.85	32.62	36.86	34.01	37.51	58.52	30.65	31.14	34.49	31.99	49.06	36.25	37.29	32.54	30.41	32.85	32.97	33.28	38.65	34.90	35.19	33.06	34.99	+ 0.1%	Feb-20
2020m03	31.90	32.00	32.43	35.07	34.91	31.42	31.56	38.77	32.33	35.80	33.29	36.61	58.17	30.72	31.09	34.90	31.08	48.88	35.00	37.20	31.17	30.40	32.33	32.63	33.21	38.69	34.90	34.41	31.17	34.09	- 2.2%	Mar-20
2020m04	31.36	31.45	30.39	35.11	34.91	31.40	31.40	38.73	32.33	35.43	32.92	36.61	58.17	28.41	28.06	34.60	30.02	48.88	36.25	37.00	30.14	30.40	31.95	30.65	31.49	38.60	34.75	34.23			- 0.5%	Apr-20

Yellow box: Estimations DG AGRI-G3    Orange box: Estimations based on National statistics    Grey box: "estimated" prices by MS (indicator of price movement, not to be relied upon to forecast prices)

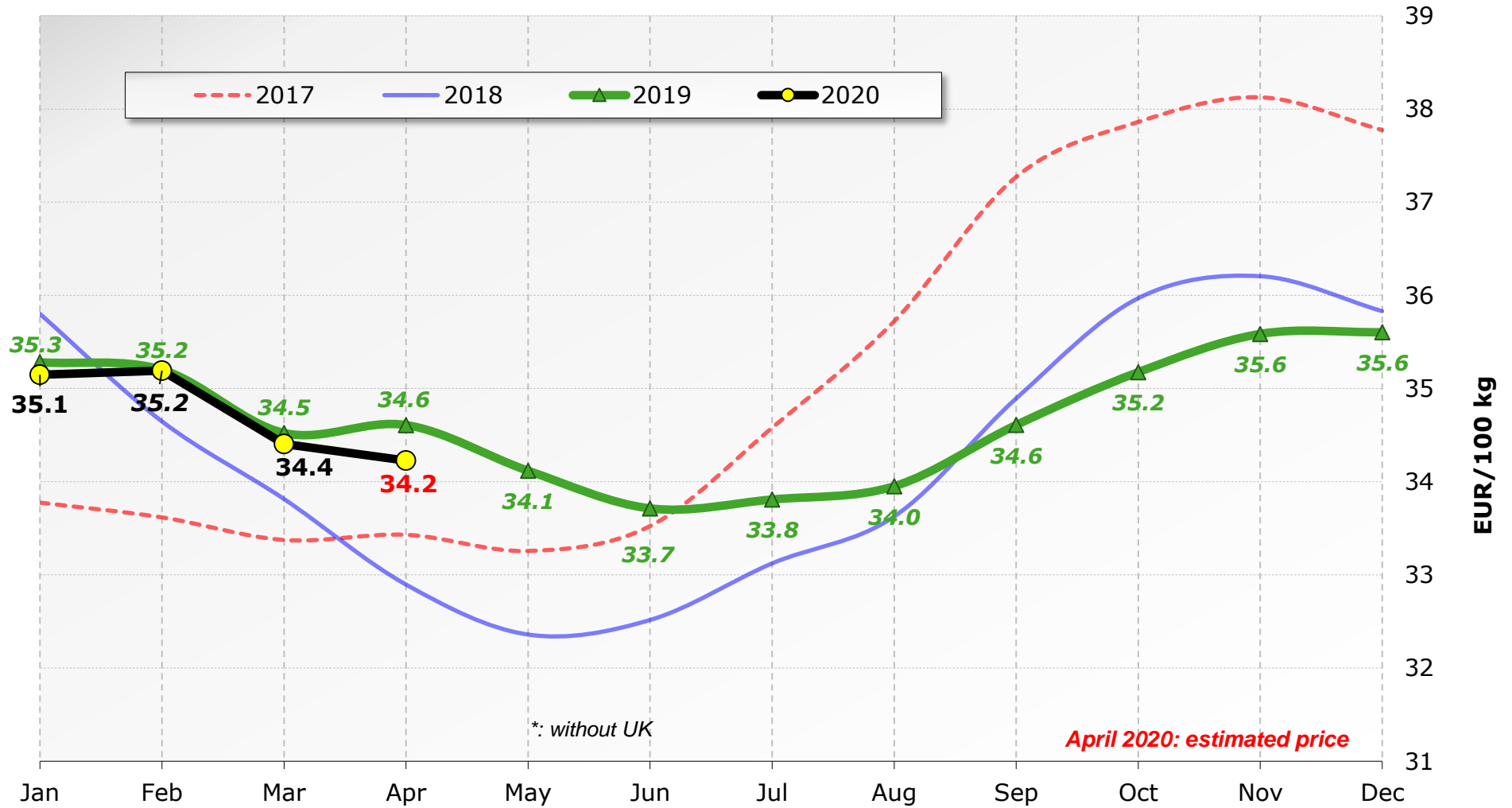
Price of Mar 20 compared to :

	BE	BG	CZ	DK	DE	EE	IE	GR	ES	FR	HR	IT	CY	LV	LT	LU	HU	MT	NL	AT	PL	PT	RO	SI	SK	FI	SE	EU (without UK)	GB	EU + UK
Feb 20	-5.7%	idem	-5.9%	idem	+0.3%	-0.1%	-9.5%	-0.2%	-0.9%	-2.9%	-2.1%	-2.4%	-0.6%	+0.2%	-0.2%	+1.2%	-2.8%	-0.4%	-3.4%	-0.2%	-4.2%	-0.0%	-1.6%	-1.0%	-0.2%	+0.1%	idem	-2.2%	-5.7%	-2.6%
Mar 19	-5.0%	+4.0%	-5.2%	+2.6%	+0.3%	-0.5%	-3.3%	+1.3%	+2.1%	+6.7%	-0.1%	-6.9%	+0.5%	+1.3%	+1.7%	+1.3%	-1.3%	+4.6%	-4.1%	-1.2%	-3.8%	-0.5%	+4.2%	+1.1%	+1.3%	+2.9%	-0.4%	-0.3%	-4.8%	-0.8%



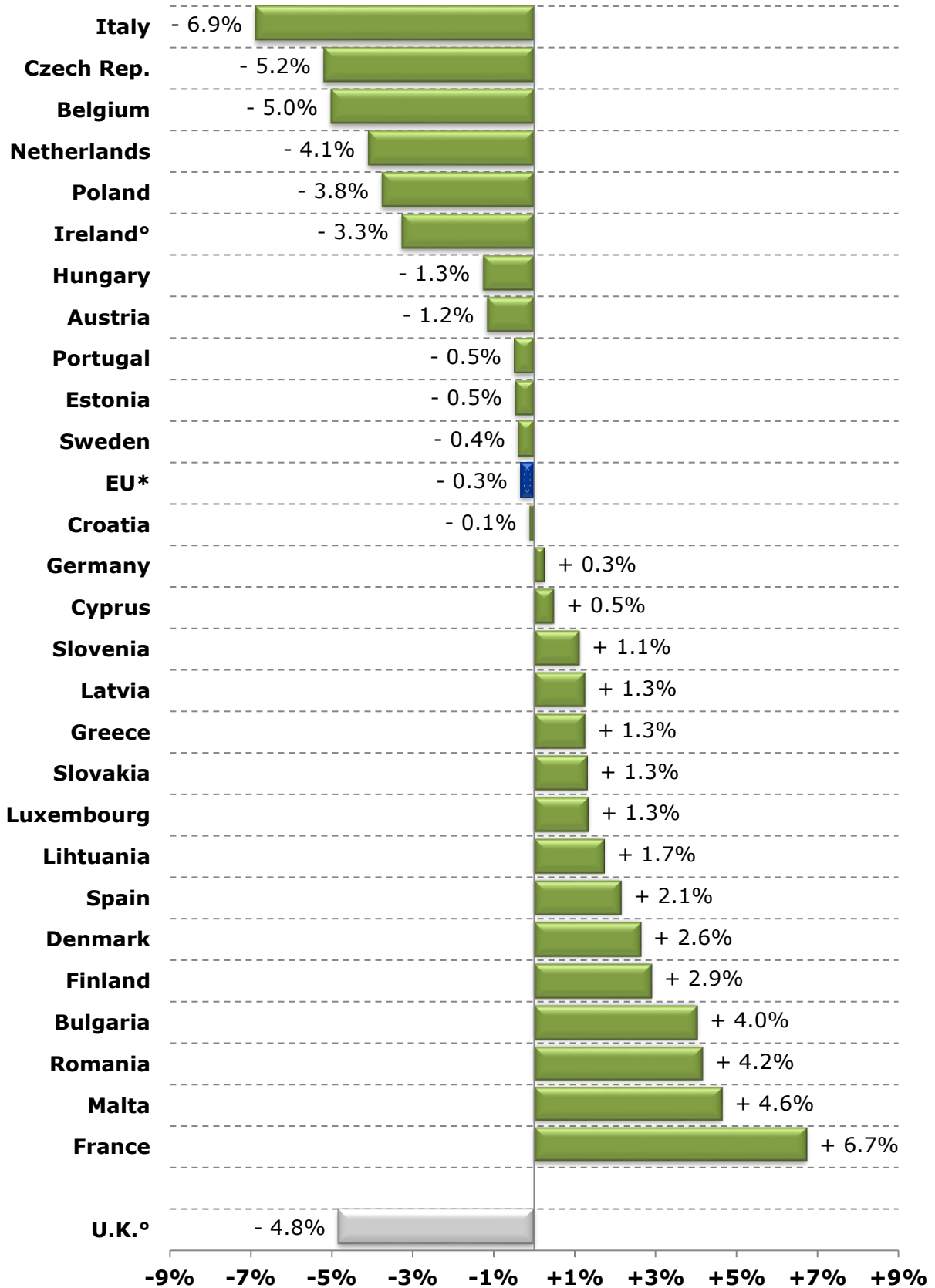
# Milk Prices paid to the Producers

EU\* (weight. avg.)



Source : Member States Reg. (EU) No 2017/1185 Article 12(a) - Annex II.4(a))

## Raw Milk Price evolution in March 2020 compared to March 2019

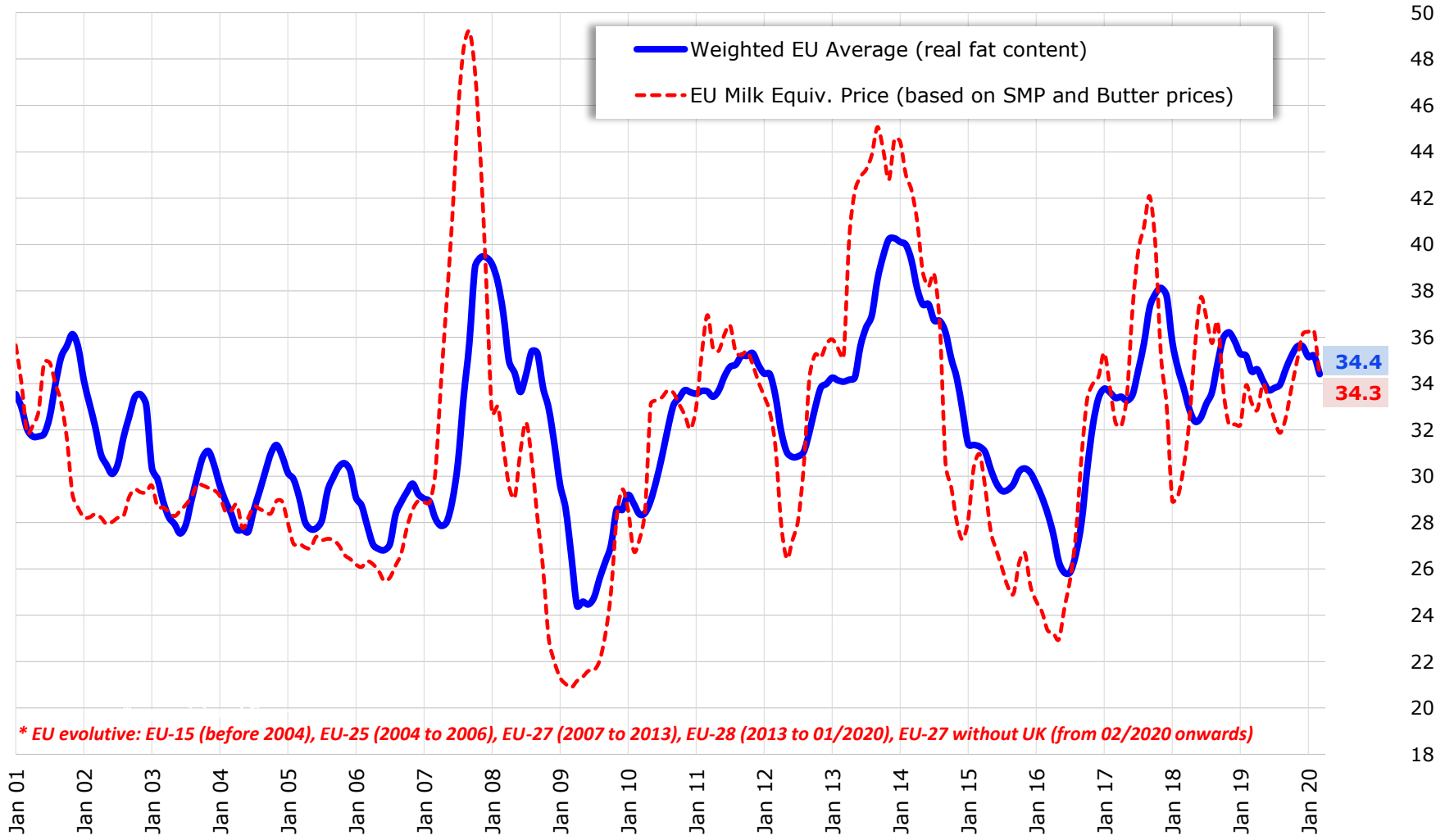


\*: without UK    ° : estimated figures for Mar 2020

Source : Member States (Reg. (EU) No 2017/1185 Article 12(a) - Annex II.4(a))

# EU evolutive\* Raw Milk Prices Evolution (up to Mar 2020)

EUR/100 kg

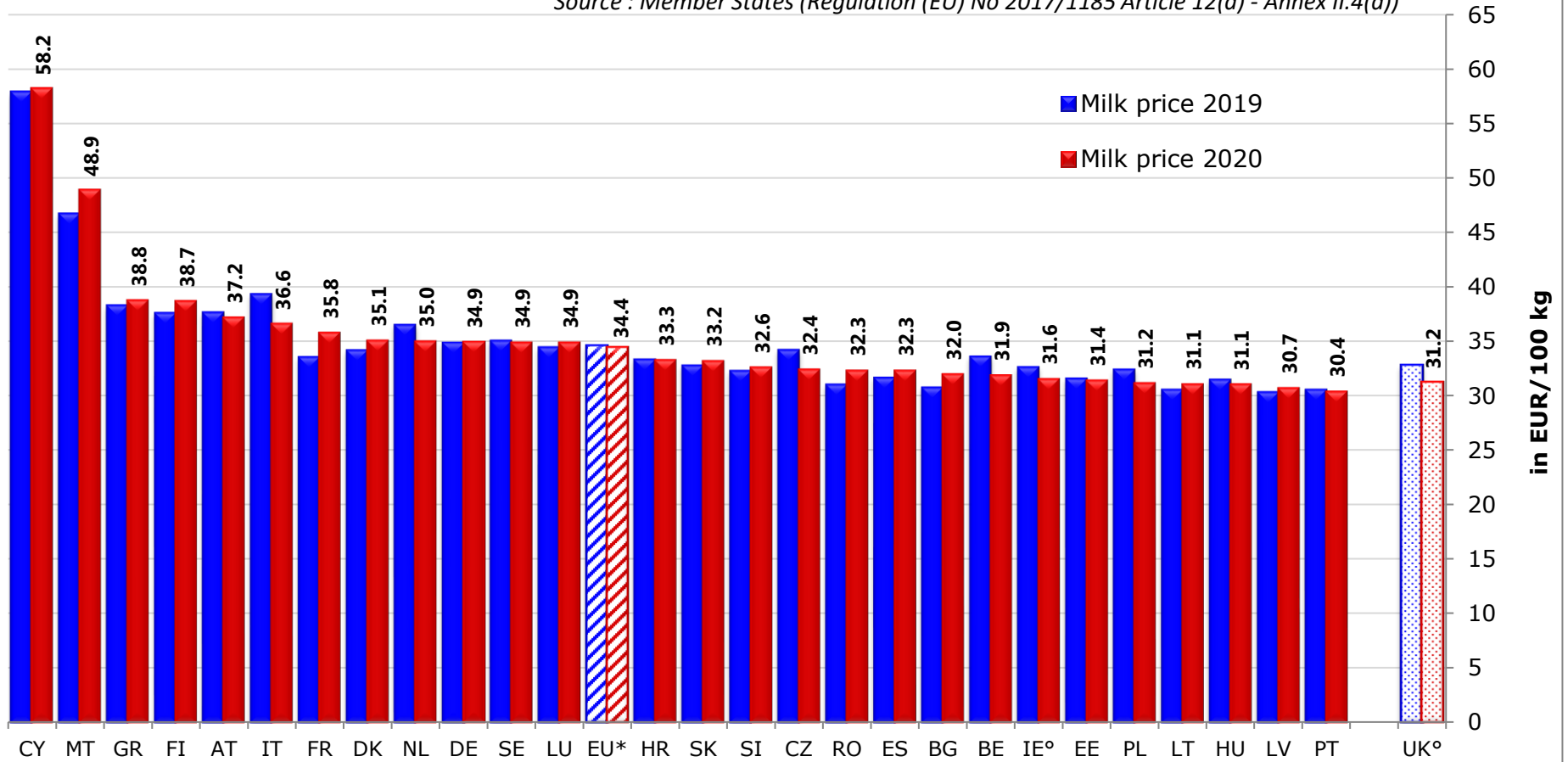


Source : MS' communications under Reg. (EU) No 2017/1185 Article 12(a) - Annex II.4(a)

# EU\* MILK PRICES

( Mar 2020 vs Mar 2019 )

Source : Member States (Regulation (EU) No 2017/1185 Article 12(a) - Annex II.4(a))



\*: without UK

° : estimated figures for Mar 2020